

# MAX

## POWER

### CONTROL TO THE MAX

#### Hydraulic Tunnel Thruster

# Series CT HYD 300

**INSTALLATION**

**OPERATION**

**MAINTENANCE**

Serial N° : .....

Date of Installation : .....

**THIS MANUAL MUST BE KEPT ON BOARD AT ALL TIMES**

Via Leonardo Da Vinci, n.6 20040 Cambiago (MI), Italy

Tel. +39 039 200 1973-936 - Fax +39 039 2004299

E-mail: [contact@max-power.com](mailto:contact@max-power.com)

To ensure a proper installation, correct usage and long-lasting enjoyment of this equipment, please take time to read this manual thoroughly.

## Table of Contents

Number	Description	Page
1	General Installation Guidelines	2
2	Tunnel	2-3
3	Propeller Drive Leg & Motor Support	3
4	The Hydraulic Motor and its Adapter	4
5	Propellers	4
6	Protection Grill	4
7	Hydraulic General Remarks	4-5
8	Hydraulic Specifications	5
9	Hydraulic Custom Pack	6
10	Maintenance	7
11	Notes	8
12	Spare Parts List	9
13	Spare Part Diagram	10
14	Control System Connections: Electro-Hydraulic Pump	11
15	Control System Connections: Motor with Clutched PTO	12
16	Max Power Hydraulic Diagram	13
17	Positioning and Measurements	14
18	Warranty Procedures	15-16
19	List of Distributors	17-18
20	Warranty Document (to be returned)	19

Your thruster is a high quality technical product and should be treated as such. The employment of qualified marine personnel, with experience in bow thruster installation, is strongly advised. Where possible, the boat manufacturer's architects, design departments and/or shipyards should be consulted, prior to installation taking place. For any boat requiring official classification, bodies of approval should also be consulted at the earliest opportunity. In any case, all other bodies, governmental or otherwise, should be contacted to ensure conformity with legal regulations relating to the boat in question.

Your thruster should be delivered with the following parts:

Hydraulic Motor & Coupling	Motor Support	Controller HYD	Drive Leg, Propeller Pin(s) & Coupling
Propellers (2)	Safety Stickers x 2	Manual	

## 1) GENERAL INSTALLATION GUIDELINES

Decide on the best location for the MAX POWER (See drawing: "Positioning & Measurements" at back of manual).

The tunnel must be as low as possible and as far forward as possible.

The propellers must not protrude beyond the hull line.

The ideal position of the tunnel is such that there is at least the depth of one tunnel diameter from the water line to the top of the fitted tunnel.

Decreased performance of the MAX POWER due to inadequate immersion depth can be compensated by fitting the tunnel as far forward as possible (increasing lever arm movement).

The MAX POWER hydraulic thrusters can be fitted vertically, horizontally or tilting.

**IMPORTANT:** When using tunnels of different thickness (example: metallic tunnel) it is imperative that the area between the drive leg/gasket and the motor support, matches the thickness as indicated in the table on the drawing "Positioning & Measurements" at back of manual and that the motor support is stable.

If you have less than 8 mm thickness, you will require an extra hard rubber gasket between the motor support and the tunnel.

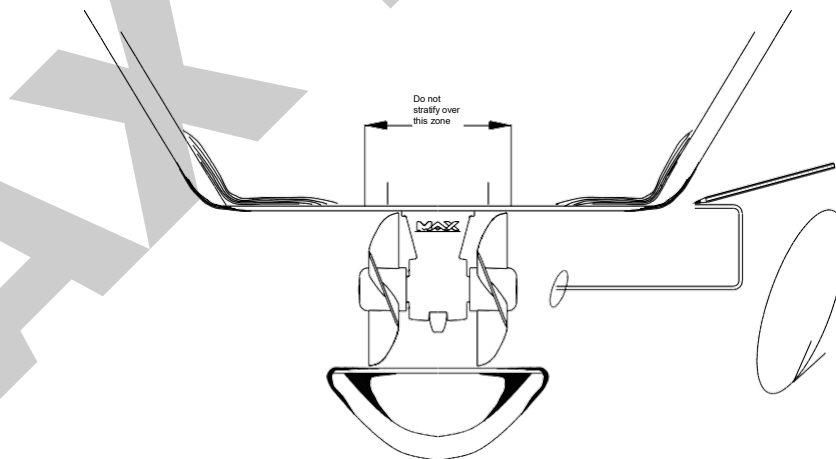
## 2) TUNNEL

When the final tunnel position is determined (and all dimensions have been checked), mark the centre of the tunnel's position and drill a  $\varnothing$  10 mm hole. Make up a metal compass from 8 mm rod.

Fit compass into the  $\varnothing$  10 mm holes and trace the form of the tunnel on to the hull (elliptical).

After cutting out the elliptic hole, disc the interior surface of the hull, by approx. 10 to 15 cm around the holes.

The outside surface of the tunnel is then ready to be fiber-glassed.



Fit the tunnel and mark the areas to be fiber-glassed. Sand these areas inside and out.

In certain installations it is preferable to drill the position of the thruster support before the installation of the tunnel.

Refit the tunnel. Apply reinforced fiberglass filler to all areas, taking care that you fill the gap between hull and tunnel. Stratify with a minimum of 8 coats of material and ISOPHTALIQUE RESINE alternating with mat and roving.

In inaccessible areas (i.e. under the tunnel), it is possible to simply apply reinforced filler.

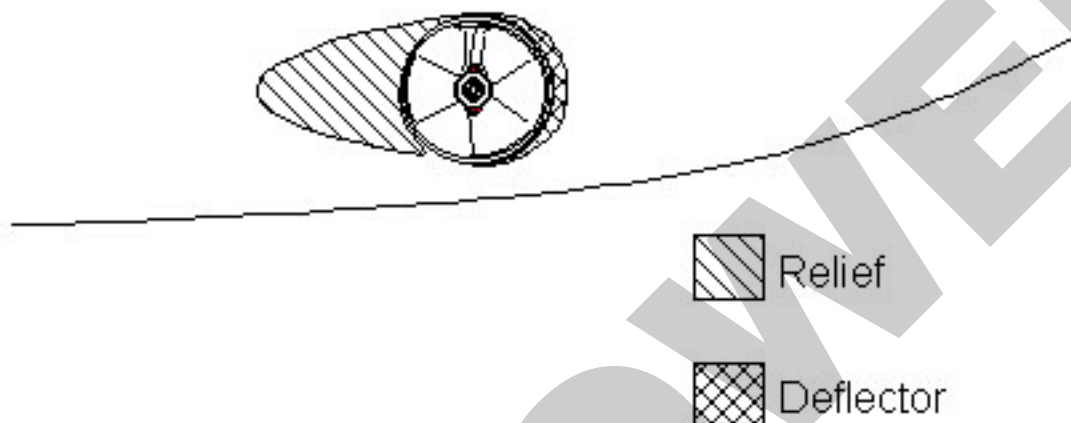
**CAUTION:** Do not apply fiber glass to the area of the motor support.

It is recommended to lightly sand down the area where the motor support is fitted.

On the outside, when the ISOPHTALIQUE RESIN has set, finish with an application of resin and material, followed with an additional coat on the hull, in the tunnel area.

To optimise the flow of water while sailing, deflectors & a relief should be fashioned.

These can be made up with several coats of reinforced filler in order to obtain the required hydrodynamic lines.



Once all fiberglass work is complete, apply a coat of epoxy or gel-coat to waterproof the entire area.

### 3) PROPELLER DRIVE LEG & MOTOR SUPPORT

The leg's gasket and the motor's support can be used to mark up the drilling position, in some cases it might be easier, to mark out the position, and drill before the stratification of the tunnel. Centre and trace the drilling positions for the leg and its support.

Fit the leg along with the gasket, in the tunnel.

Check general positioning of the propellers.

Small pieces of folded cardboard can be used to check the spacing between the propeller tips and the tunnel is even all round. Slight adjustment to align the leg in its tunnel may be necessary.

After checks, remove leg etc; remount the assembly, covering the gasket with an oil and salt water resistant jointing compound. After fitting, remove all excess compound.

The gasket must be between the leg and the tunnel, and not between the motor support and the tunnel.

Care must be taken at all times when fitting the leg into the motor support to ensure that the mating components are dirt free and covered with a light film of grease.

**IMPORTANT:** GRAPHITE GREASE MUST NOT BE USED.

Torque values: screw  $\varnothing$  12 mm = 80 Nm screw; tighten the two fixing screws alternately.

Once tightened, ensure that the propeller/s turn freely without touching the tunnel.

**Warning:** During installation, only the original screws [part number 22] delivered with the drive leg must be used. If screws of bigger length are installed, then there is risk of damage to the drive leg and water ingress onboard.

#### 4) THE HYDRAULIC MOTOR AND ITS ADAPTER

Do not separate the motor from its adapter.

Insert the lower drive coupling onto the leg drive shaft (lightly grease the shaft before doing this). Position the red plastic coupling (piece n° 10 on “Spare Part Diagram”) onto the lower coupling. Before tightening the 2 x 6 mm Allen fixing screws of the lower coupling, make sure that coupling is pushed all the way down on drive leg shaft.

Then position the motor and tighten the 4 x 10 mm to 40Nm.

**IMPORTANT:** Please note that the above coupling might need to be adjusted if any other tunnel than a Max Power tunnel (thickness 9mm) is used.

The top and bottom coupling pieces should fit tightly together to ensure maximum gripping between them.

Check that the propellers turn freely and that there is no tight spot. A certain amount of resistance is normal from the motor. When all is assembled recheck the tightness of all the motor bolts.

**NOTE:** The coupling on the motor side is in place when delivered, do not touch this.

#### 5) PROPELLERS

Check the tightness of the oil drain screw (8 mm Allen Key) and the anode (a 10 mm key).

**IMPORTANT:** To prevent limestone deposits from forming (causing damage to the joints), we highly recommend applying silicone grease to the shaft and the joints before assembling the propellers.

Fit the fixing pins and propellers

**NOTE:** Position the propeller blades opposed and not in line with one another.

Make sure that the propellers turn freely. A certain amount of resistance from the motor is normal. Tighten the 24 mm nuts on each propeller to 27 Nm.

Ensure correct protection of hands against the propellers blades.

#### 6) PROTECTION GRILLS

With a shallow tunnel installation, we recommend that you protect the propellers by fitting horizontal protection grills. These grills will however modify thruster performance.

#### 7) HYDRAULIC (general remarks)

A typical installation of the hydraulic power thruster requires the following elements:

- oil reservoir/tank
- hydraulic pump
- directional control valve
- hydraulic motor
- circuit piping
- oil cooler (depending on type of installation)

The oil reservoir/tank with return filter and suction strainer should be as close to the pump as possible and on charge. Meaning that the level of the oil should be above the pump, preferably with the oil tank above the water line.

For future maintenance, make sure that the return filter is easily accessible. An isolation valve can be fitted to the suction.

The pump can be driven by either an internal combustion engine (crankshaft pulley or gearbox PTO) or an electric motor. Depending on the speed and choice of drive, but should always comply with the rated pressure/flow of the thruster.

For an internal combustion engine with fixed or variable speed, 3 types of pumps can be used, depending on the unit to be fitted:

Direct PTO:

Fixed flow pump (\*\*\*)

Variable displacement pump, depending on the model (\*\*) (\*)

Fixed flow pump with bypass (\*\*) (\*)

PTO with clutch:

Fixed flow pump (\*\*) (\*)

Variable displacement pump depending on the model (\*\*) (\*)

Fixed flow pump with bypass (\*\*) (\*)

On a DC or AC electric motor the following types of pumps can be used:

DC MOTOR:

Fixed flow pump (\*)

AC MOTOR:

Fixed flow pump or other (\*\*) (\*)

(\*\*\*) always require oil cooler

(\*\*) require oil cooler when time of operation exceeds 15 minutes,

(\*) oil cooler not necessary

Note: The above choices also depend on capacity of the oil tank etc.

The hydraulic directional control valve (DCV) must be equipped with a pressure gauge and pressure relief valve and should preferably be placed as close as possible to the thruster unit.

The piping can be flexible or a mix of rigid and flexible type and should have crimp-connected fittings.

The piping should match interior diameters and the service pressure equal or above that which has been recommended.

The circuits must be as direct as possible and avoid any bends and joints.

The circuits must be clean and closed-off until final connection takes place.

The thruster hoses arriving at the thruster must be of the thermo-plastic non-conductive type.

The hydraulic motor drain line and the return T-line of the DCV should each go separately and directly, back into the top of the oil tank.

Use synthetic, mineral or vegetable hydraulic oil, to ISO standard 32 to 48

## 8) HYDRAULIC SPECIFICATIONS

Max Power CT300 HYD - Model 250: Flow = 33/38 liters/Min Pressure = 200/220 bars

Detailed instructions and diagrams are delivered with each pack, specific to the installation chosen.

9) HYDRAULIC CUSTOM PACK.

Tailor made according to specifications.

**ELECTRO PUMP PACK:** 1 x Electro Pump 24Volt  
 1 x Power Relay  
 1 x Fuse Holder  
 1 x Power Fuse

**HYDRAULIC CONTROL PACK (12 V / 24 V):**  
 1 Directional Control Valve (Including pressure gauge & Pressure Relieve Valve)  
 1 Control Panel.

**RESERVOIR PACK**

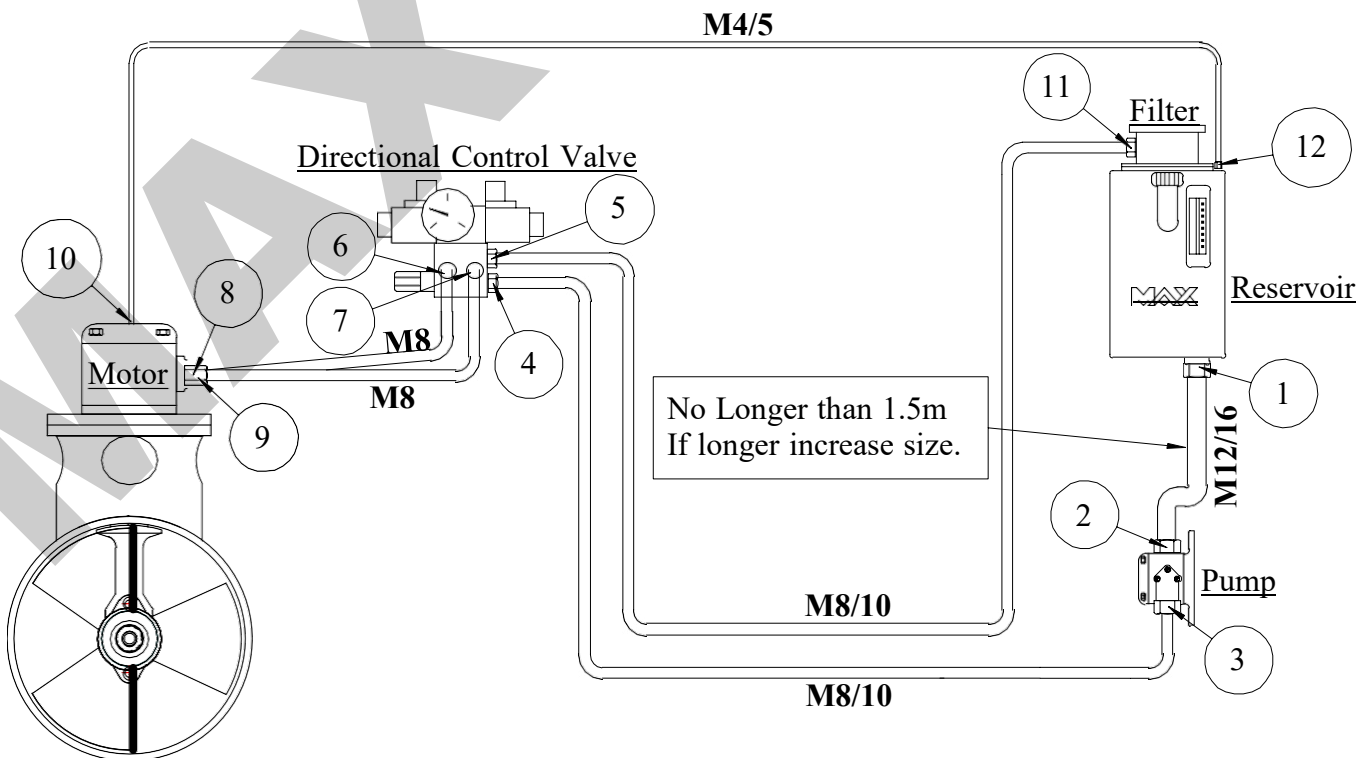
Oil Reservoir 12 / 18 / 40 liters including: Return Filter  
 Suction Strainer  
 Oil Level Sight Gauge/ Thermometer  
 Filler Cap  
 Motor Drain Connection

**INTERIOR DIAMETERS AND MODULES of the piping between the hydraulic elements:**

M4 = 1/4''      M5 = 5/16''      M6 = 3/8''      M8 = 1/2''  
 M10 = 5/8''      M12 = 3/4''      M16 = 1''

**INTAKE DIAMETERS of standard hydraulic elements MAX POWER:**

1 / 2 / 11 = Female BSP 3/4''      3 / 6 / 7 / 8 / 9 = Female BSP 1/2'',  
 4 / 5 = Female BSP 3/8''      10 / 12 = Female BSP 1/4''



## 10) MAINTENANCE

In order to ensure peak performance from your MAX POWER, the tunnel, the leg and the propellers must be kept clean.

**IMPORTANT:** In order to prevent chalky deposits, which cause damage to the oil seals, we recommend cleaning the shaft and the oil seals first, then applying a layer of silicon oil before assembling the propellers.

**ANNUAL BASIS:** CHANGE the anode (if necessary).  
CHANGE drive leg oil, if classic (bronze) leg.  
CHECK the oil and the hydraulic filtration circuit (only if necessary).

**EVERY 5 YEARS:** DRAIN hydraulic oil system and change the filter and refill.

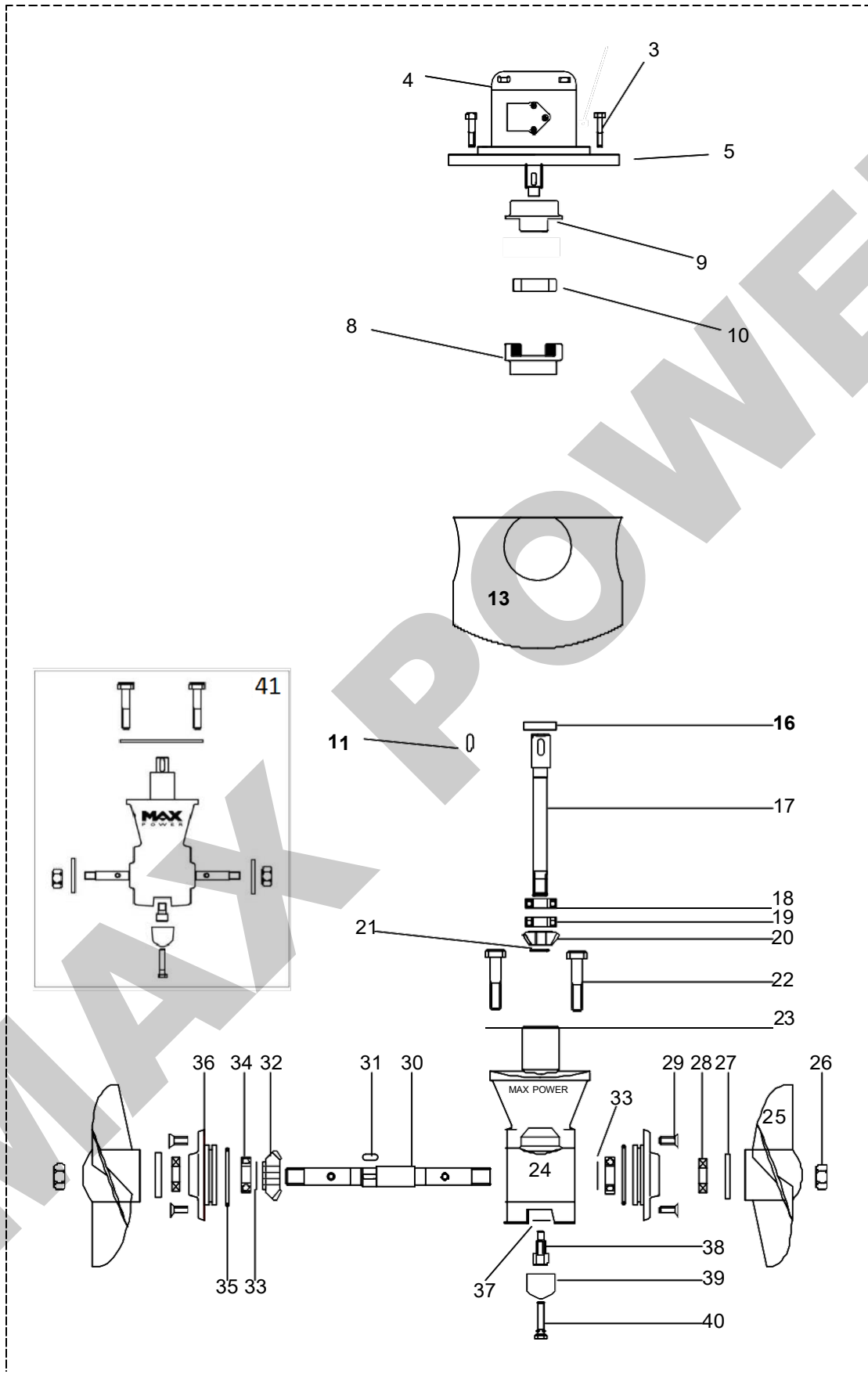
THE MAX-POWER TEAM WISHES YOU SUCCESSFUL MANOEUVRING AND ENJOYABLE CRUISING.

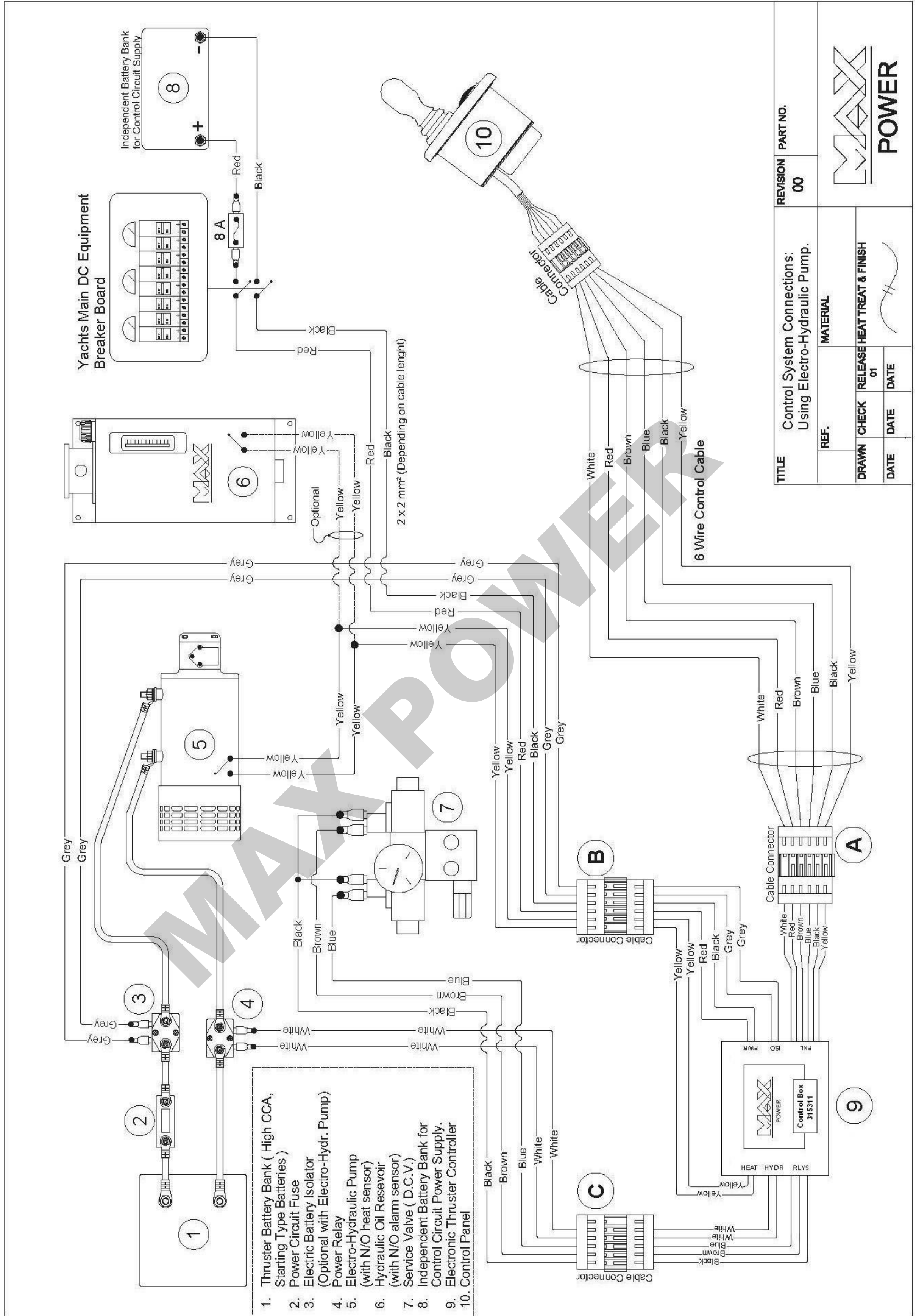
IT IS IMPORTANT TO KEEP THIS MANUAL ON BOARD!



<b>SPARE PARTS LIST</b>			
<b>MAX POWER SERIES 300 HYD</b>			
<b>No</b>	<b>Description</b>	<b>Quantity</b>	<b>Code</b>
3	Hydraulic motor plate fixing bolts	4	-
4	Hydraulic Motor	1	313389
5	Hydraulic Motor adapter plate	1	633752
8	Coupling Aluminum for Motor and Drive leg shafts	1	633751
9	Coupling Aluminum for Motor and Drive leg shafts	1	633756
10	Rubber Coupling PG66	1	633749
11	Drive Key	1	-
13	Motor Support CT300 HYD	1	633740
16	Drive shaft oil seal	1	-
17	Drive shaft	1	-
18	Upper ball bearing	1	-
19	Lower ball bearing	1	-
20	Drive gear	1	310415
21	Clip	1	-
22	Leg fixing screws	2	-
23	Fibre joint leg/tunnel	1	310253
24	Leg housing	1	-
25	Propeller Ø 300	2	313810
26	Propeller nut	2	-
27	Propeller drive pin	2	-
28	Oil seal	2	-
29	Screw cap	4	-
30	Propeller shaft	1	-
31	Propeller shaft key	1	-
32	Propeller shaft gear	1	310416
33	Shims (set of 1mm)	2	-
34	Propeller shaft ball bearing	2	-
35	O-ring cap	2	-
36	Cap	2	-
37	Copper washer	1	-
38	Drain plug	1	-
39	Anode	1	315300
40	Anode screw	1	-
41	Bronze Drive leg CT300 HYD	1	315388

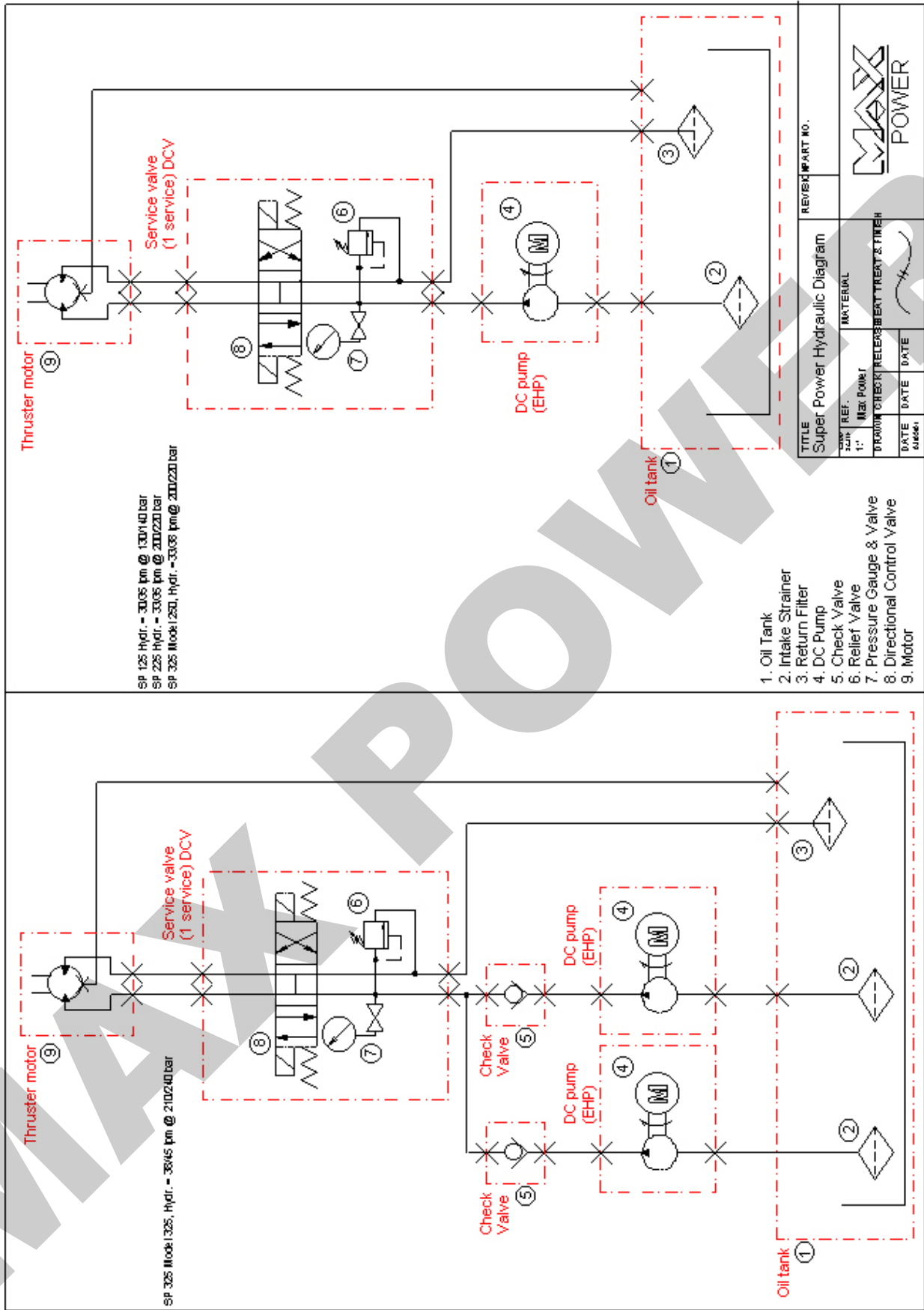
### Exploded diagram CT HYD 300



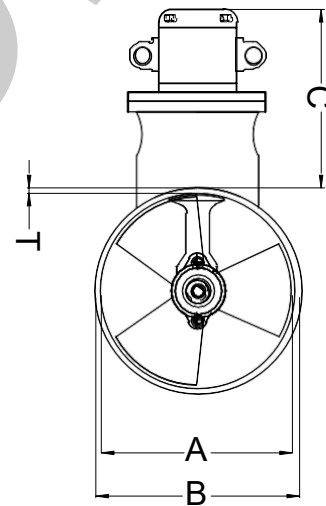
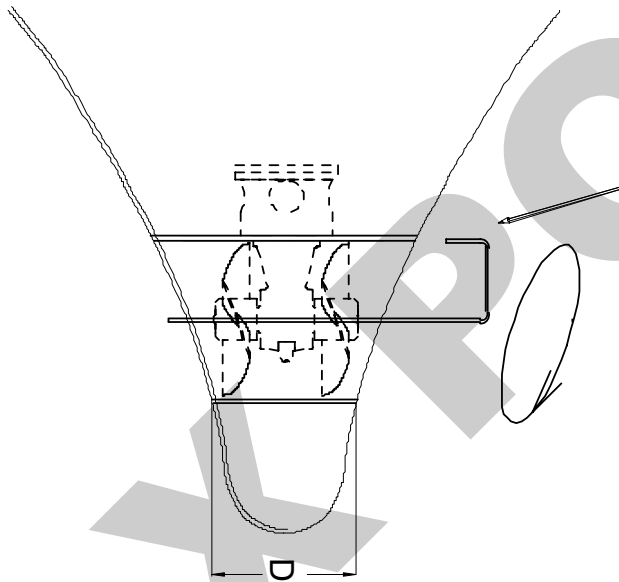
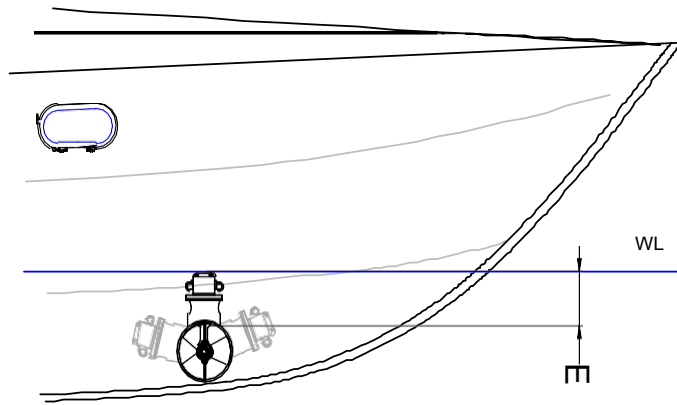


<b>TITLE</b>		<b>REVISION</b>		<b>PART NO.</b>	
Control System Connections: Using Electro-Hydraulic Pump.		00		MAX	
<b>REF.</b>		<b>MATERIAL</b>		<b>POWER</b>	
<b>DRAWN</b>	<b>CHECK</b>	<b>RELEASE</b>	<b>HEAT TREAT &amp; FINISH</b>		
		01			
<b>DATE</b>	<b>DATE</b>	<b>DATE</b>	<b>DATE</b>		





### Hydraulic: Positioning and Measurements



Model	125	225	300	325
Dim(mm)				
A	185	250	300	315
B	197	264	318	333
C	210	210	220	220
D	190	220	280	280
T	6	7	9	9
E Ideal	185	250	300	315
E min	110	140	150	160
Weight	9kg	12kg	20kg	20kg

## Introduction

The purpose of this document is to set out the terms of warranty cover offered in relation to products purchased by the End User from Max Power or its approved network of resellers.

### 1. Definitions

- Authorized Repair Number: The number given by Max Power on reporting a fault with your thruster
- Dealer: An authorized Max Power sales centre
- End User: The boat supplied with supplied equipment and the owner thereof
- Installer: The authorized centre responsible for the installation of your thruster
- Manufacturer: supplier of the equipment under warranty
- Pleasure Craft: Vessels used for owner's personal use that have no commercial use (i.e Charter boats or work boats)
- Resellers: Max Power approved distributors and dealers
- Serial Number: Number in upper right hand corner of Warranty document
- Supplier: The manufacturer (Max Power)
- Warranty: The terms and conditions that are covered by the manufacturer

### 2. Period of Coverage

The equipment manufactured by the Supplier is guaranteed to be free from defective workmanship, components and materials under normal usage conditions for a period of two (2) years from the date of purchase by the End User. This warranty is transferable to subsequent owners of this equipment during the period of coverage.

### 3. Warranty Registration

Register your purchase within 3 months from the purchase date, to receive free extended warranty coverage by 1 year (3 years' total warranty coverage). This can be done using one of the following methods (NB. proof of purchase must be included to establish that equipment is still under warranty):

- a) The quickest and easiest method to register your warranty is to fill in the Warranty Form (on our official website) from the following link and submit it. <https://www.max-power.com/warranty>
- b) Register a Ticket by filling in the Contact Us form (on our official website) [www.max-power.com/contact](http://www.max-power.com/contact). Kindly ensure to note down the Ticket Number for future reference.

### 4. Warranty Terms

If the material is used for anything other than for pleasure craft, the guarantee is limited to a six-month period.

Year 1: All factory testing, diagnosis, repairs and replacements are performed at no charge to the End User; All parts and up to two hours of labor are covered for repairs and replacements conducted in the field.

Year 2 & 3: All factory testing, diagnosis, repairs and replacements are performed at no charge to the End User.

This excludes any damage or faults occurring from normal wear and tear on the following items: engine, oil seals, relay contacts (If warranty is registered within the 3 month period following installation)

### 5. Warranty Exclusions

- Damage due to modifications or installation contrary to published specifications
- Cost of hauling the boat
- Damage due to repairs performed by an unauthorized service centre
- Damage due to lack of normal maintenance services
- Damage due to water
- Parts replaced due to normal wear and tear
- Repairs performed without knowledge of manufacturer (please contact dealer to receive Repair Authorization Number)
- Tampering of equipment by the End User
- Cost of travel to and from the job site
- Cost of economic loss, including injury to any person, damage to property, loss of income or profit, communication, lodging, inconvenience
- Consequential damage due to failure, including those arising from collision with other vessels or objects

### 6. Procedural Guidelines

PLEASE VIEW THE TROUBLE SHOOTING LIST ON THE MANUAL OF YOUR PRODUCT TO ASCERTAIN OR SOLVE ORIGIN OF PROBLEM PRIOR TO CONTACTING THE DEALER/INSTALLER

1. Contact your dealer/installer to report the problem.  
If you do not know who this is, contact the nearest Max Power distributor  
If you are in foreign waters, please contact the nearest Max Power distributor
2. Ensure you have your serial number and model number to hand (top right hand corner of warranty)
3. Dealer/Installer will come to site to decipher the cause of the fault
4. If the cause of fault is due to a manufacturing problem the dealer will contact Max Power to receive Repair Authorization Number.
5. If the problem is due to an installation error please contact your installer.

IF POSSIBLE: PLEASE TAKE PHOTOGRAPHS OF THE THRUSTER TO SHOW PROBLEM

### 7. Service Centers

Please go online <https://www.max-power.com/network> to find the authorized service station of your area.